

**NOTES:**

1) FOR OPTIMAL REINFORCEMENT PLACEMENT IN THE NUDURA FORM, SPACING OF HORIZONTAL REINFORCEMENT TO BE SPECIFIED AT 18" (457mm) O.C. AND VERTICAL REINFORCEMENT TO BE SPECIFIED AT MULTIPLES OF 8" (203mm) O.C. REFER TO NUDURA REINFORCEMENT PLACEMENT DETAILS.

2.1) FINISHED GRADE LEVEL SPECIFIED FOR FROST PRONE AREAS. FOR ALTERNATIVE GRADE LEVEL SEE DETAIL C6A29.

This detail is for general informational purposes only. The project design professional determines, in its sole discretion, whether this detail or a functionally equivalent detail is best suited for the project with respect to any architecture, engineering, and design requirements, including any local building code requirements. If this document is not reviewed and the product is not approved for use by a licensed design professional, the customer agrees that the detail may contain substantive flaws requiring correction, and hereby releases Tremco CPG Inc. from any and all liability related to the design and installation of the product. This detail is subject to change without notice. Contact Tremco to ensure you have the most recent version.

**Combustible Construction - Floor at Grade**



Nudura Technical Support: 866-468-6299  
International: +1 705-726-9499

Detail: Nudura 8" (203mm) Form Unit, Ledger Board Connection,  
Brick Veneer Finish

Drawn by: JN/NL

Checked by: KS

Scale: 1:8

Revision #: 02

Revised by: KAB

Date: 3/13/2024

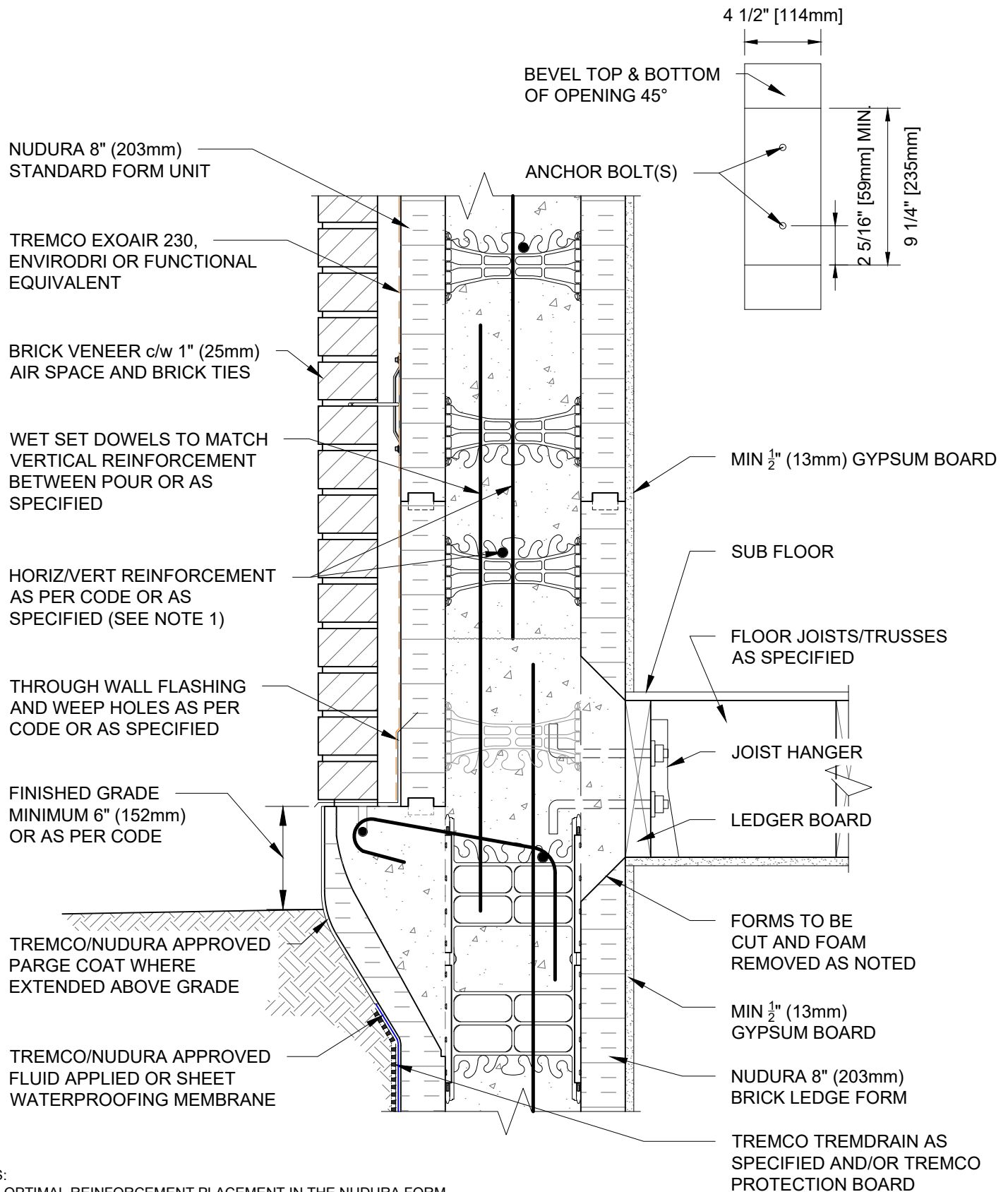
File Name:

C8A05



Construction Products Group

[www.tremcocpg.com](http://www.tremcocpg.com)



#### NOTES:

1) FOR OPTIMAL REINFORCEMENT PLACEMENT IN THE NUDURA FORM, SPACING OF HORIZONTAL REINFORCEMENT TO BE SPECIFIED AT 18" (457mm) O.C. AND VERTICAL REINFORCEMENT TO BE SPECIFIED AT MULTIPLES OF 8" (203mm) O.C. REFER TO NUDURA REINFORCEMENT PLACEMENT DETAILS.

2.2) FINISHED GRADE LEVEL SPECIFIED FOR FROST PRONE AREAS. FOR ALTERNATIVE GRADE LEVEL SEE DETAIL C6A32.

This detail is for general informational purposes only. The project design professional determines, in its sole discretion, whether this detail or a functionally equivalent detail is best suited for the project with respect to any architecture, engineering, and design requirements, including any local building code requirements. If this document is not reviewed and the product is not approved for use by a licensed design professional, the customer agrees that the detail may contain substantive flaws requiring correction, and hereby releases Tremco CPG Inc. from any and all liability related to the design and installation of the product. This detail is subject to change without notice. Contact Tremco to ensure you have the most recent version.

#### Combustible Construction - Floor at Grade



Nudura Technical Support: 866-468-6299  
International: +1 705-726-9499

Detail: Nudura 8" (203mm) Form Unit, Ledger Board Connection,  
Brick Veneer Finish, Parallel to Wall

Drawn by: TVC

Checked by: KS

Scale: 1:8

Revision #: 02

Revised by: KAB

Date: 3/13/2024

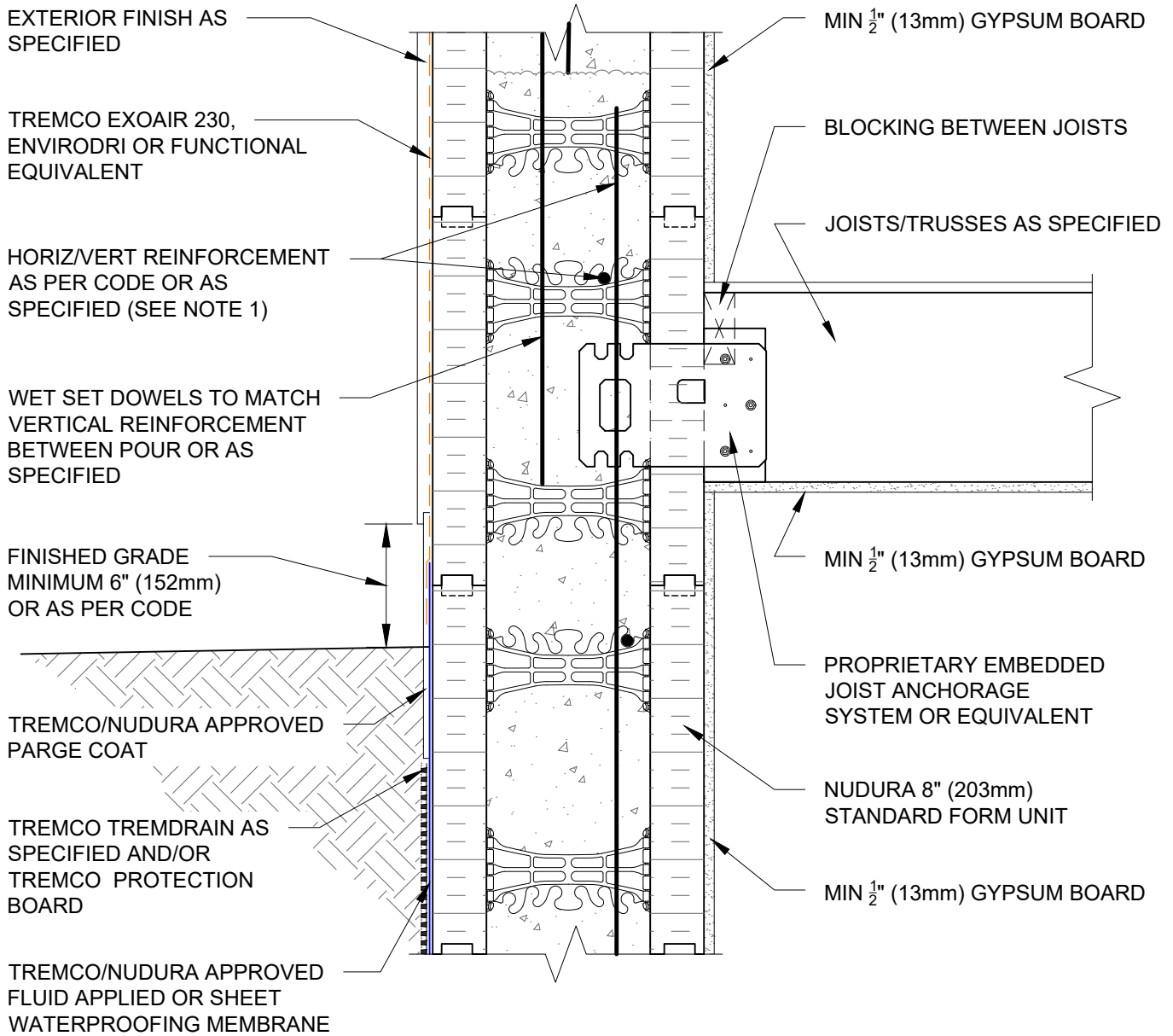
File Name:

C8A06



Construction Products Group

www.tremcocpg.com



#### NOTES:

1) FOR OPTIMAL REINFORCEMENT PLACEMENT IN THE NUDURA FORM, SPACING OF HORIZONTAL REINFORCEMENT TO BE SPECIFIED AT 18" (457mm) O.C. AND VERTICAL REINFORCEMENT TO BE SPECIFIED AT MULTIPLES OF 8" (203mm) O.C. REFER TO NUDURA REINFORCEMENT PLACEMENT DETAILS.

*This detail is for general informational purposes only. The project design professional determines, in its sole discretion, whether this detail or a functionally equivalent detail is best suited for the project with respect to any architecture, engineering, and design requirements, including any local building code requirements. If this document is not reviewed and the product is not approved for use by a licensed design professional, the customer agrees that the detail may contain substantive flaws requiring correction, and hereby releases Tremco CPG Inc. from any and all liability related to the design and installation of the product. This detail is subject to change without notice. Contact Tremco to ensure you have the most recent version.*

#### Combustible Construction - Floor at Grade

Detail: Nudura 8" (203mm) Form Unit, Floor Joist Connection at Grade  
Multi-Purpose Hanger Exterior Finish as Specified

Drawn by: TVC

Checked by: KS

Scale: 1:8

Revision #: 02

Revised by: KAB

Date: 3/13/2024

File Name:

C8A07

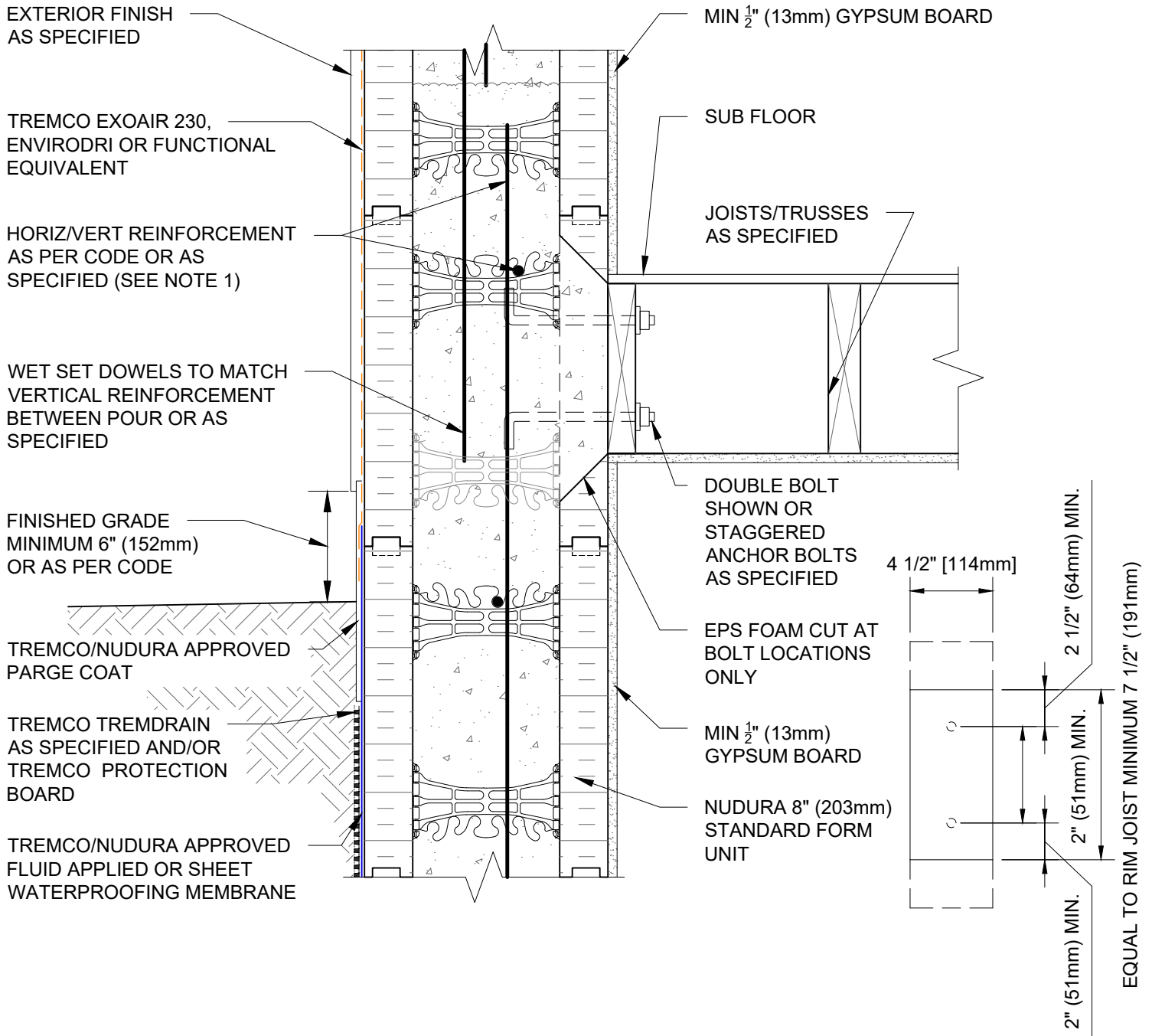


Nudura Technical Support: 866-468-6299  
International: +1 705-726-9499

[www.tremcocpg.com](http://www.tremcocpg.com)



Construction Products Group



#### NOTES:

1) FOR OPTIMAL REINFORCEMENT PLACEMENT IN THE NUDURA FORM, SPACING OF HORIZONTAL REINFORCEMENT TO BE SPECIFIED AT 18" (457mm) O.C. AND VERTICAL REINFORCEMENT TO BE SPECIFIED AT MULTIPLES OF 8" (203mm) O.C. REFER TO NUDURA REINFORCEMENT PLACEMENT DETAILS.

*This detail is for general informational purposes only. The project design professional determines, in its sole discretion, whether this detail or a functionally equivalent detail is best suited for the project with respect to any architecture, engineering, and design requirements, including any local building code requirements. If this document is not reviewed and the product is not approved for use by a licensed design professional, the customer agrees that the detail may contain substantive flaws requiring correction, and hereby releases Tremco CPG Inc. from any and all liability related to the design and installation of the product. This detail is subject to change without notice. Contact Tremco to ensure you have the most recent version.*

#### Combustible Construction - Floor at Grade

Detail: Nudura 8" (203mm) Form Unit, Floor Joist Connection at Grade, Multi-Purpose Hanger, Exterior Finish as Specified

File Name:

Drawn by: TVC

Checked by: KS

Scale: 1:8

C8A08

Revision #: 05

Revised by: KAB

Date: 3/13/2024

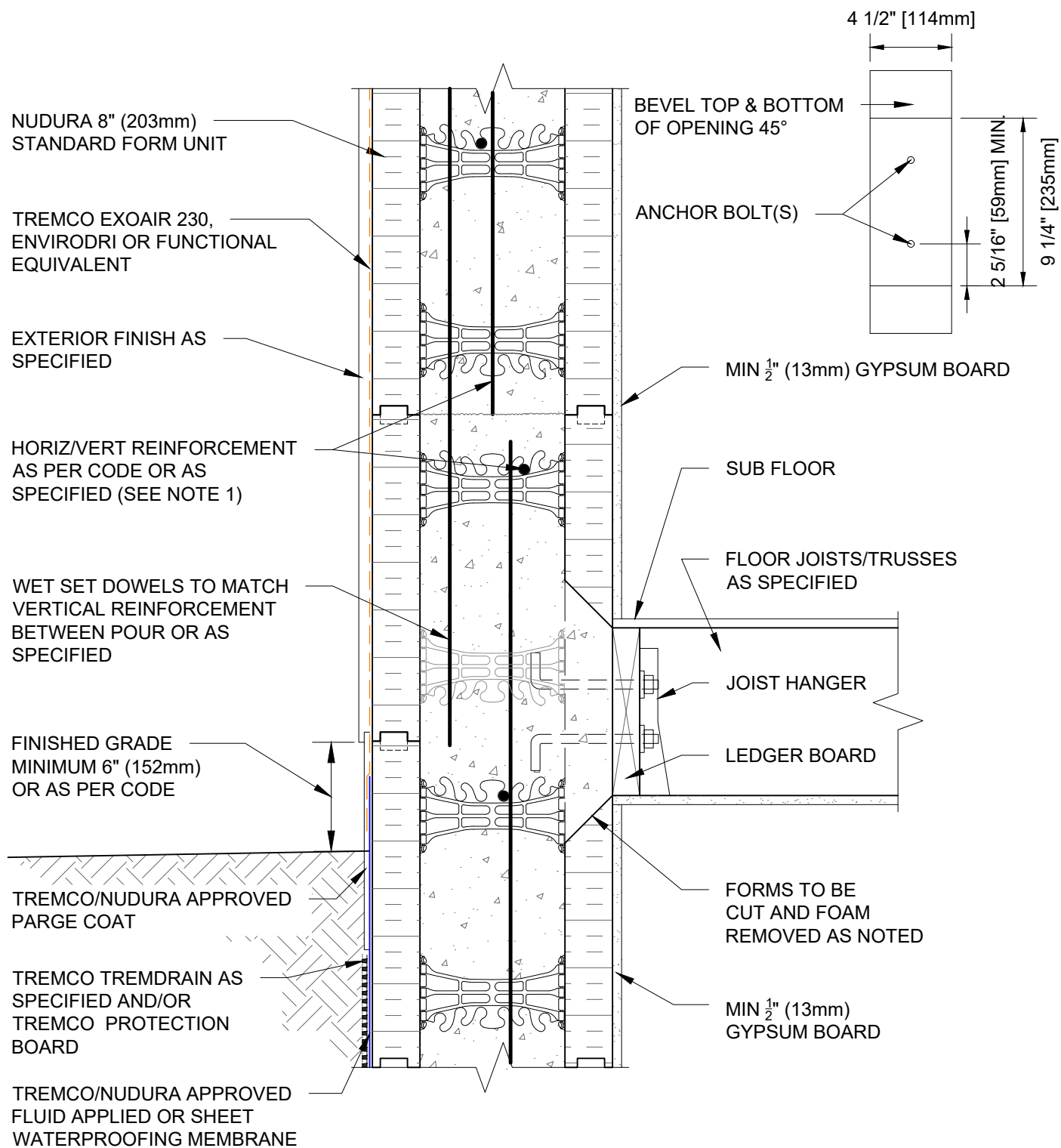
[www.tremcocpg.com](http://www.tremcocpg.com)



Nudura Technical Support: 866-468-6299  
International: +1 705-726-9499



Construction Products Group



#### NOTES:

1) FOR OPTIMAL REINFORCEMENT PLACEMENT IN THE NUDURA FORM, SPACING OF HORIZONTAL REINFORCEMENT TO BE SPECIFIED AT 18" (457mm) O.C. AND VERTICAL REINFORCEMENT TO BE SPECIFIED AT MULTIPLES OF 8" (203mm) O.C. REFER TO NUDURA REINFORCEMENT PLACEMENT DETAILS.

*This detail is for general informational purposes only. The project design professional determines, in its sole discretion, whether this detail or a functionally equivalent detail is best suited for the project with respect to any architecture, engineering, and design requirements, including any local building code requirements. If this document is not reviewed and the product is not approved for use by a licensed design professional, the customer agrees that the detail may contain substantive flaws requiring correction, and hereby releases Tremco CPG Inc. from any and all liability related to the design and installation of the product. This detail is subject to change without notice. Contact Tremco to ensure you have the most recent version.*

#### Combustible Construction - Floor at Grade



Nudura Technical Support: 866-468-6299  
International: +1 705-726-9499

Detail: Nudura 8" (203mm) Form Unit, Ledger Board Detail, Exterior Finish as Specified, Perp. to Wall

Drawn by: TVC

Checked by: KS

Scale: 1:8

Revision #: 02

Revised by: KAB

Date: 3/13/2024

File Name:

C8A09

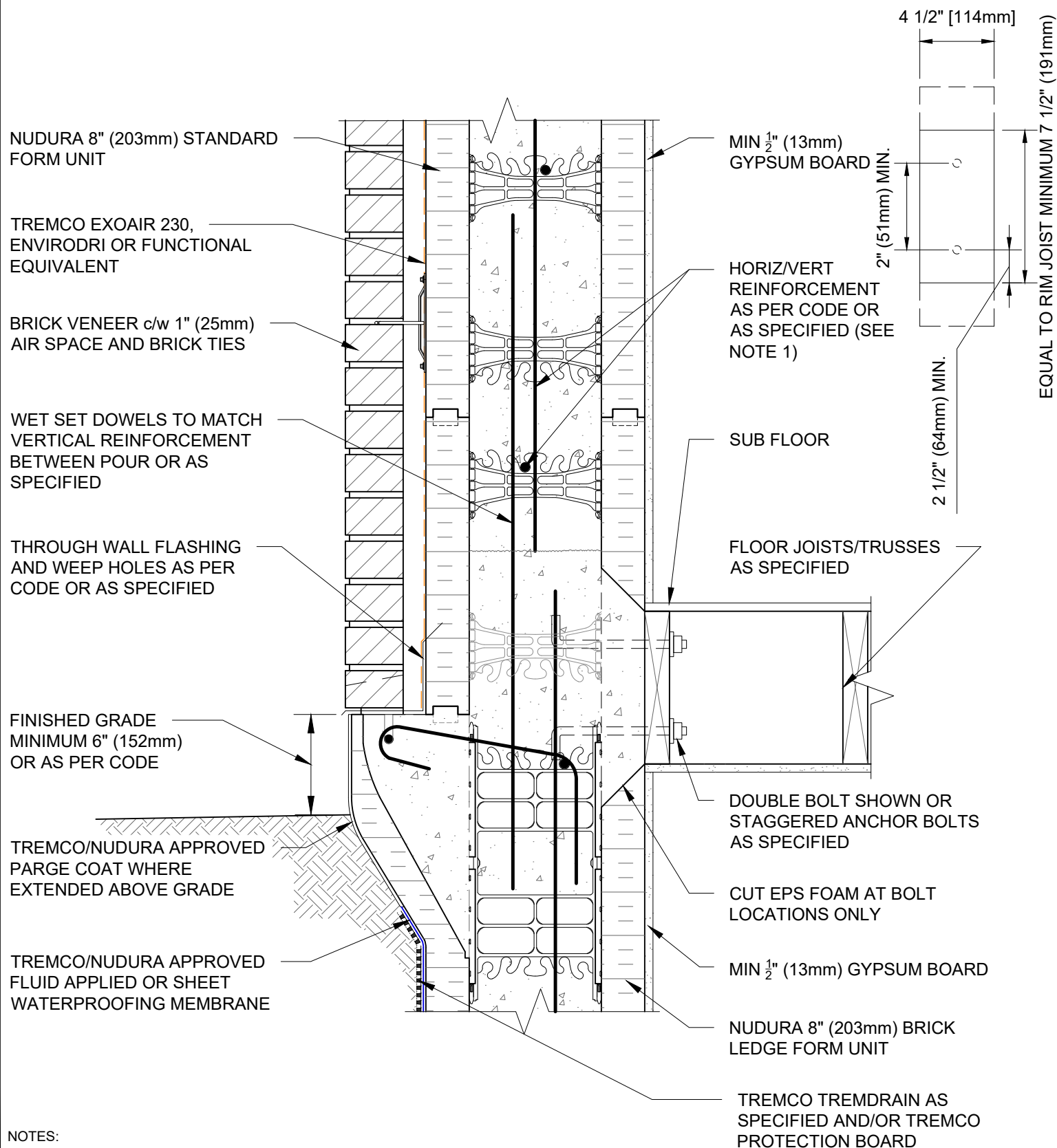


Construction Products Group

[www.tremcocpg.com](http://www.tremcocpg.com)







#### NOTES:

1) FOR OPTIMAL REINFORCEMENT PLACEMENT IN THE NUDURA FORM, SPACING OF HORIZONTAL REINFORCEMENT TO BE SPECIFIED AT 18" (457mm) O.C. AND VERTICAL REINFORCEMENT TO BE SPECIFIED AT MULTIPLES OF 8" (203mm) O.C. REFER TO NUDURA REINFORCEMENT PLACEMENT DETAILS.

2.1) FINISHED GRADE LEVEL SPECIFIED FOR FROST PRONE AREAS.

This detail is for general informational purposes only. The project design professional determines, in its sole discretion, whether this detail or a functionally equivalent detail is best suited for the project with respect to any architecture, engineering, and design requirements, including any local building code requirements. If this document is not reviewed and the product is not approved for use by a licensed design professional, the customer agrees that the detail may contain substantive flaws requiring correction, and hereby releases Tremco CPG Inc. from any and all liability related to the design and installation of the product. This detail is subject to change without notice. Contact Tremco to ensure you have the most recent version.

#### Combustible Construction - Floor at Grade

Detail: Nudura 8" (203mm) Form Unit, Multi-Purpose Hanger, Brick Veneer Finish, Joists Perpendicular to Wall

Drawn by: TVC

Checked by: KS

Scale: 1:8

Revision #: 05

Revised by: KAB

Date: 3/13/2024

File Name:

C8A11



Nudura Technical Support: 866-468-6299  
International: +1 705-726-9499

[www.tremcocpg.com](http://www.tremcocpg.com)



Construction Products Group

NUDURA 8" (203mm) STANDARD  
FORM UNIT

BRICK VENEER c/w 1" (25mm)  
AIR SPACE AND BRICK TIES

TREMCO EXOAIR 230,  
ENVIRODRI OR FUNCTIONAL  
EQUIVALENT

WET SET DOWELS TO MATCH  
VERTICAL REINFORCEMENT  
BETWEEN POUR OR AS  
SPECIFIED

THROUGH WALL FLASHING  
AND WEEP HOLES AS PER  
CODE OR AS SPECIFIED

FINISHED GRADE  
MINIMUM 6" (152mm)  
OR AS PER CODE

TREMCO/NUDURA APPROVED  
PARGE COAT WHERE  
EXTENDED ABOVE GRADE

TREMCO/NUDURA APPROVED  
FLUID APPLIED OR SHEET  
WATERPROOFING MEMBRANE

MIN  $\frac{1}{2}$ " (13mm) GYPSUM BOARD

HORIZ/VERT REINFORCEMENT  
AS PER CODE OR AS SPECIFIED  
(SEE NOTE 1)

SUB FLOOR

FLOOR JOISTS/TRUSSES  
AS SPECIFIED

PROPRIETARY EMBEDDED  
JOIST ANCHORAGE SYSTEM OR  
EQUIVALENT

NUDURA 8" (203mm) BRICK  
LEDGE FORM UNIT

MIN  $\frac{1}{2}$ " (13mm) GYPSUM BOARD

TREMCO TREMDRAIN AS  
SPECIFIED AND/OR TREMCO  
PROTECTION BOARD

NOTES:

1) FOR OPTIMAL REINFORCEMENT PLACEMENT IN THE NUDURA FORM,  
SPACING OF HORIZONTAL REINFORCEMENT TO BE SPECIFIED AT 18"  
(457mm) O.C. AND VERTICAL REINFORCEMENT TO BE SPECIFIED AT  
MULTIPLES OF 8" (203mm) O.C. REFER TO NUDURA REINFORCEMENT  
PLACEMENT DETAILS.

2.1) FINISHED GRADE LEVEL SPECIFIED FOR FROST PRONE AREAS.

This detail is for general informational purposes only. The project design professional determines, in its sole discretion, whether this detail or a functionally equivalent detail is best suited for the project with respect to any architecture, engineering, and design requirements, including any local building code requirements. If this document is not reviewed and the product is not approved for use by a licensed design professional, the customer agrees that the detail may contain substantive flaws requiring correction, and hereby releases Tremco CPG Inc. from any and all liability related to the design and installation of the product. This detail is subject to change without notice. Contact Tremco to ensure you have the most recent version.

Combustible Construction - Floor at Grade



Nudura Technical Support: 866-468-6299  
International: +1 705-726-9499

Detail: Nudura 8" (203mm) Form Unit, Multi-Purpose Hanger, Brick Veneer Finish

Drawn by: TVC

Checked by: KS

Scale: 1:8

Revision #: 05

Revised by: KAB

Date: 3/13/2024

File Name:

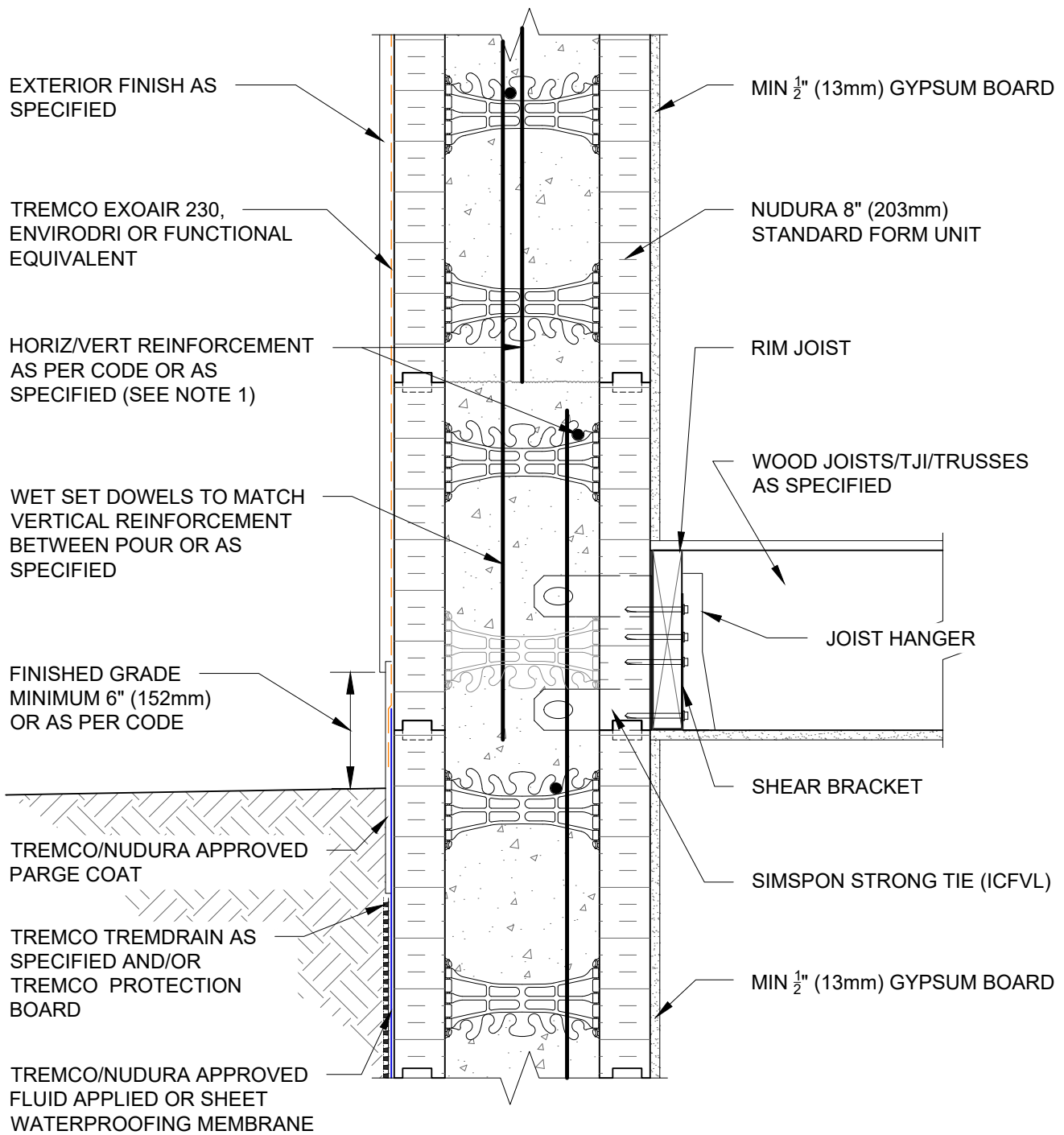
C8A12



Construction Products Group

[www.tremcocpg.com](http://www.tremcocpg.com)





#### NOTES:

1) FOR OPTIMAL REINFORCEMENT PLACEMENT IN THE NUDURA FORM, SPACING OF HORIZONTAL REINFORCEMENT TO BE SPECIFIED AT 18" (457mm) O.C. AND VERTICAL REINFORCEMENT TO BE SPECIFIED AT MULTIPLES OF 8" (203mm) O.C. REFER TO NUDURA REINFORCEMENT PLACEMENT DETAILS.

*This detail is for general informational purposes only. The project design professional determines, in its sole discretion, whether this detail or a functionally equivalent detail is best suited for the project with respect to any architecture, engineering, and design requirements, including any local building code requirements. If this document is not reviewed and the product is not approved for use by a licensed design professional, the customer agrees that the detail may contain substantive flaws requiring correction, and hereby releases Tremco CPG Inc. from any and all liability related to the design and installation of the product. This detail is subject to change without notice. Contact Tremco to ensure you have the most recent version.*

#### Combustible Construction - Floor at Grade



Nudura Technical Support: 866-468-6299  
International: +1 705-726-9499

Detail: Nudura 8" (203mm) Form Unit, Simpson Ledger Hanger System,  
Exterior Finish as Specified, Perp. to Wall, at Grade

Drawn by: TVC

Checked by: KS

Scale: 1:8

Revision #: 04

Revised by: KAB

Date: 3/13/2024

File Name:

C8A21



Construction Products Group

[www.tremcocpg.com](http://www.tremcocpg.com)

BRICK VENEER c/w 1" (25mm)  
AIR SPACE AND BRICK TIES

TREMCO EXOAIR 230,  
ENVIRODRI OR FUNCTIONAL  
EQUIVALENT

HORIZ/VERT REINFORCEMENT  
AS PER CODE OR AS  
SPECIFIED (SEE NOTE 1)

WET SET DOWELS TO MATCH  
VERTICAL REINFORCEMENT  
BETWEEN POUR OR AS  
SPECIFIED

THROUGH WALL FLASHING  
AND WEEP HOLES AS PER  
CODE OR AS SPECIFIED

FINISHED GRADE  
MINIMUM 6" (152mm)  
OR AS PER CODE

TREMCO/NUDURA APPROVED  
PARGE COAT WHERE  
EXTENDED ABOVE GRADE

TREMCO/NUDURA APPROVED  
FLUID APPLIED OR SHEET  
WATERPROOFING MEMBRANE

MIN 1/2" (13mm) GYPSUM BOARD

NUDURA 8" (203mm)  
STANDARD FORM UNIT

RIM JOIST

WOOD JOISTS/TJI/TRUSSES  
AS SPECIFIED

JOIST HANGER

SHEAR BRACKET

SIMPSON STRONG TIE (ICFVL)

MIN 1/2" (13mm) GYPSUM BOARD

NUDURA 8" (203mm)  
BRICK LEDGE FORM

TREMCO TREMDRAIN AS  
SPECIFIED AND/OR TREMCO  
PROTECTION BOARD

NOTES:

1) FOR OPTIMAL REINFORCEMENT PLACEMENT IN THE NUDURA FORM, SPACING OF HORIZONTAL REINFORCEMENT TO BE SPECIFIED AT 18" (457mm) O.C. AND VERTICAL REINFORCEMENT TO BE SPECIFIED AT MULTIPLES OF 8" (203mm) O.C. REFER TO NUDURA REINFORCEMENT PLACEMENT DETAILS.

2.1) FINISHED GRADE LEVEL SPECIFIED FOR FROST PRONE AREAS.

This detail is for general informational purposes only. The project design professional determines, in its sole discretion, whether this detail or a functionally equivalent detail is best suited for the project with respect to any architecture, engineering, and design requirements, including any local building code requirements. If this document is not reviewed and the product is not approved for use by a licensed design professional, the customer agrees that the detail may contain substantive flaws requiring correction, and hereby releases Tremco CPG Inc. from any and all liability related to the design and installation of the product. This detail is subject to change without notice. Contact Tremco to ensure you have the most recent version.

Combustible Construction - Floor at Grade



Nudura Technical Support: 866-468-6299  
International: +1 705-726-9499

Detail: Nudura 8" (203mm) Form Unit, Simpson Ledger Hanger System,  
Brick Veneer Finish

Drawn by: TVC

Checked by: KS

Scale: 1:8

Revision #: 04

Revised by: KAB

Date: 3/13/2024

[www.tremcocpg.com](http://www.tremcocpg.com)

File Name:

C8A22



Construction Products Group

BRICK VENEER c/w 1" (25mm)  
AIR SPACE AND BRICK TIES

TREMCO EXOAIR 230,  
ENVIRODRI OR FUNCTIONAL  
EQUIVALENT

HORIZ/VERT REINFORCEMENT  
AS PER CODE OR AS  
SPECIFIED (SEE NOTE 1)

WET SET DOWELS TO MATCH  
VERTICAL REINFORCEMENT  
BETWEEN POUR OR AS  
SPECIFIED

THROUGH WALL FLASHING  
AND WEEP HOLES AS PER  
CODE OR AS SPECIFIED

FINISHED GRADE  
MINIMUM 6" (152mm)  
OR AS PER CODE

TREMCO/NUDURA APPROVED  
PARGE COAT WHERE  
EXTENDED ABOVE GRADE

TREMCO/NUDURA APPROVED  
FLUID APPLIED OR SHEET  
WATERPROOFING MEMBRANE

MIN 1/2" (13mm) GYPSUM BOARD

NUDURA 8" (203mm)  
STANDARD FORM UNIT

RIM JOIST

WOOD JOISTS/TJI/TRUSSES  
AS SPECIFIED

WOOD JOISTS/TJI/TRUSSES  
AS SPECIFIED

SHEAR BRACKET

SIMPSON STRONG TIE (ICFVL)

MIN 1/2" (13mm) GYPSUM BOARD

NUDURA 8" (203mm)  
BRICK LEDGE FORM

TREMCO TREMDRAIN AS  
SPECIFIED AND/OR TREMCO  
PROTECTION BOARD

#### NOTES:

1) FOR OPTIMAL REINFORCEMENT PLACEMENT IN THE NUDURA FORM, SPACING OF HORIZONTAL REINFORCEMENT TO BE SPECIFIED AT 18" (457mm) O.C. AND VERTICAL REINFORCEMENT TO BE SPECIFIED AT MULTIPLES OF 8" (203mm) O.C. REFER TO NUDURA REINFORCEMENT PLACEMENT DETAILS.

2.1) FINISHED GRADE LEVEL SPECIFIED FOR FROST PRONE AREAS.

This detail is for general informational purposes only. The project design professional determines, in its sole discretion, whether this detail or a functionally equivalent detail is best suited for the project with respect to any architecture, engineering, and design requirements, including any local building code requirements. If this document is not reviewed and the product is not approved for use by a licensed design professional, the customer agrees that the detail may contain substantive flaws requiring correction, and hereby releases Tremco CPG Inc. from any and all liability related to the design and installation of the product. This detail is subject to change without notice. Contact Tremco to ensure you have the most recent version.

#### Combustible Construction - Floor at Grade



Nudura Technical Support: 866-468-6299  
International: +1 705-726-9499

Detail: Nudura 8" (203mm) Form Unit, Simpson Ledger Hanger System,  
Brick Veneer Finish, Parallel to Wall

Drawn by: TVC

Checked by: KS

Scale: 1:8

Revision #: 02

Revised by: KAB

Date: 3/13/2024

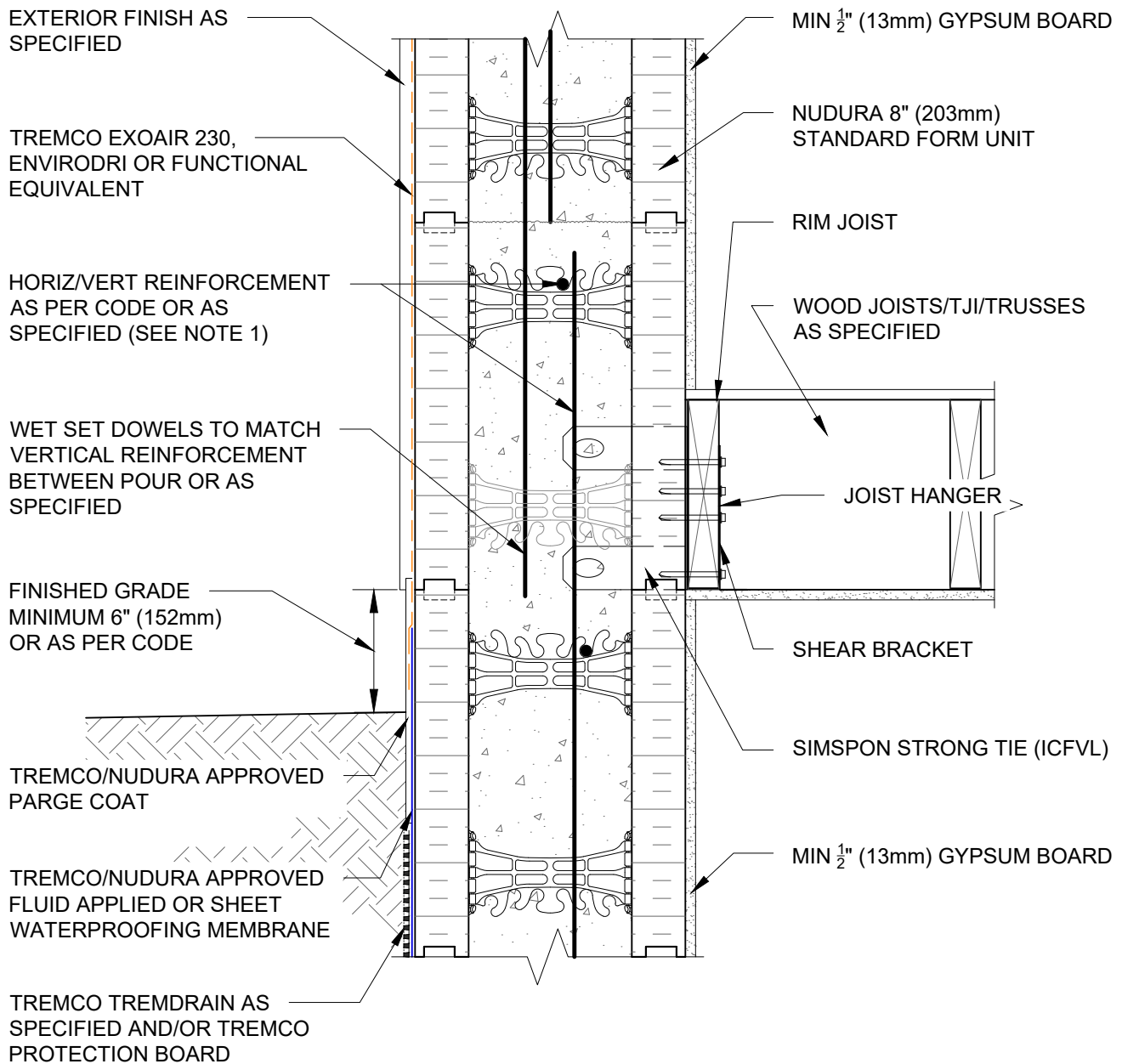
[www.tremcocpg.com](http://www.tremcocpg.com)

File Name:

C8A23



Construction Products Group



#### NOTES:

1) FOR OPTIMAL REINFORCEMENT PLACEMENT IN THE NUDURA FORM, SPACING OF HORIZONTAL REINFORCEMENT TO BE SPECIFIED AT 18" (457mm) O.C. AND VERTICAL REINFORCEMENT TO BE SPECIFIED AT MULTIPLES OF 8" (203mm) O.C. REFER TO NUDURA REINFORCEMENT PLACEMENT DETAILS.

*This detail is for general informational purposes only. The project design professional determines, in its sole discretion, whether this detail or a functionally equivalent detail is best suited for the project with respect to any architecture, engineering, and design requirements, including any local building code requirements. If this document is not reviewed and the product is not approved for use by a licensed design professional, the customer agrees that the detail may contain substantive flaws requiring correction, and hereby releases Tremco CPG Inc. from any and all liability related to the design and installation of the product. This detail is subject to change without notice. Contact Tremco to ensure you have the most recent version.*

#### Combustible Construction - Floor at Grade



Nudura Technical Support: 866-468-6299  
International: +1 705-726-9499

Detail: Nudura 8" (203mm) Form Unit, Simpson Ledger Hanger System,  
Exterior Finish as Specified, Parallel to Wall

Drawn by: TVC

Checked by: KS

Scale: 1:8

Revision #: 04

Revised by: KAB

Date: 3/13/2024

[www.tremcocpg.com](http://www.tremcocpg.com)

File Name:

C8A24



Construction Products Group